

Banding information for parents

SEND
Dorset
local offer



dorsetforyou.gov.uk/EHCPbanding

Mainstream schools, including early years providers and colleges, get funding for every pupil aged 0 – 25 including children with Education, Health and Care Plans (EHCPs).

Schools also receive additional funding for children that have special educational needs. This is called banding.

A band is a description of identified need which is linked to an amount of money. There are four levels of banding. Decisions made on a child's level of banding are made by a specialist panel.

Banding gives schools more flexibility to use a range of approaches such as:




- Group activities
- Specialist support
- One-to-one support

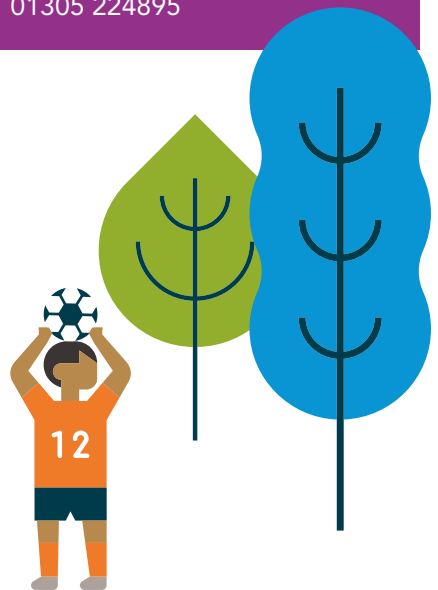
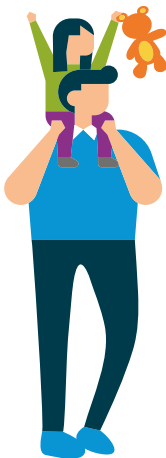
The support for your child will be linked to the outcomes in their EHCP, which can be reviewed at any point during the year.

Banding is decided when the draft EHCP is agreed.

If you need to talk to someone about the banding your child has been given, talk to your SEN planning co-ordinator.

For more information on banding and SEND

-  dorsetforyou.gov.uk/EHCPbanding
-  senteam@dorsetcc.gov.uk
-  01305 224895



Dorset County Council